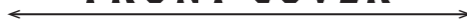


**BACK OF THE  
FRONT COVER**



**BLEED**

Any background images or colors, including borders, should extend to this line.

**TRIM**

This is where the brochures will be cut.

**SAFETY**

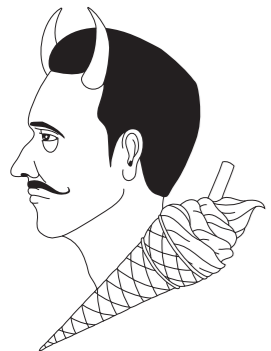
Anything important that shouldn't be cut off must be within the safety line. If there are borders, they should extend from the bleed to the safety line, or beyond it.

**BACK OF THE  
BACK COVER**



**FOLD**

**FOLD**



**12x18 BROCHURE**

MORE AT [WWW.FIREBALLPRINTING.COM](http://WWW.FIREBALLPRINTING.COM)